



MONTHLY MEMBERSHIP PROGRESS REPORT

District 24 A

Results as of: 2/17/2014 11:17:44AM

GMT: JERRY SMITH

LOCATION VIRGINIA

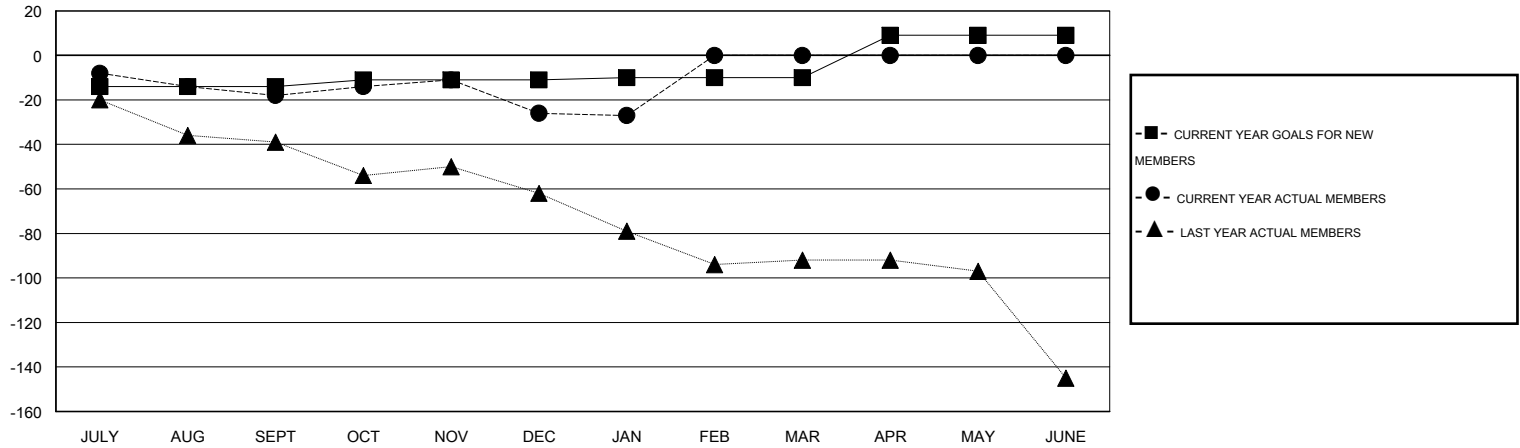
GMT CA 1

Clubs					Members				
RESULTS FOR 2013-2014					RESULTS FOR 2013-2014				
QUARTER	NEW CLUB GOAL	ACTUAL NEW CLUBS	ACTUAL DROPPED CLUBS	ACTUAL NET GAIN/LOSS	QUARTER	NEW MEMBER GOAL	ACTUAL NEW MEMBERS	ACTUAL DROPPED MEMBERS	ACTUAL NET GAIN/LOSS
JULY/AUG/SEPT	0	0	0	0	JULY/AUG/SEPT	-14	23	41	-18
OCT/NOV/DEC	0	0	0	0	OCT/NOV/DEC	3	37	45	-8
JAN/FEB/MAR	0	0	0	0	JAN/FEB/MAR	1	14	15	-1
APR/MAY/JUNE	1	0	0	0	APR/MAY/JUNE	19	0	0	0

GOALS AND ACTUAL NEW CLUBS CUMULATIVE



GOALS AND ACTUAL MEMBERS CUMULATIVE



DROPPED CLUBS: 0	33 CLUBS OF 61 ADDED 1 OR MORE NEW MEMBERS	<u>GENDER DISTRIBUTION</u>	
<u>DROPPED MEMBERS</u>		MALE	1,140 (68.47%)
DECEASED	15	FEMALE	525 (31.53%)
CLUB CANCELLED	0	<u>FAMILY UNIT MEMBERS</u> 292	
OTHER	86	<u>HEAD OF HOUSEHOLD</u> 141	
TOTAL	101	<u>NON-HEAD OF HOUSEHOLD</u> 151	

[CLICK HERE FOR HEALTH ASSESSMENT DATA](#)